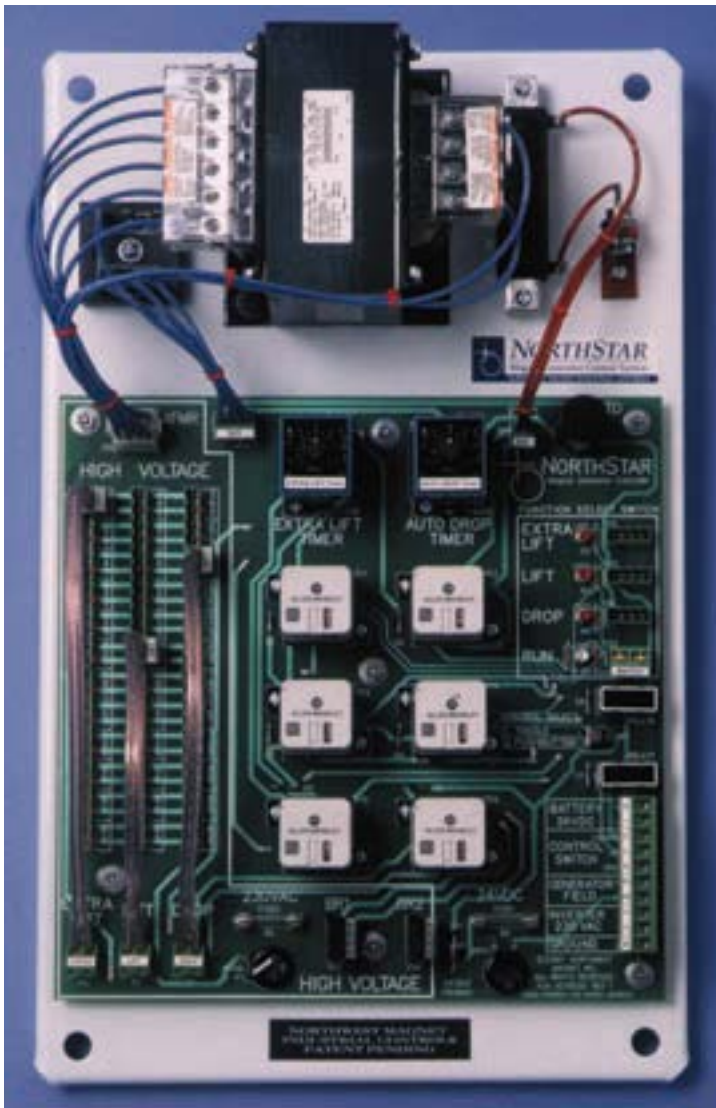


NORTHSTAR

Magnet Generator Control System™

The Last Magnet Controller You Will Ever Need



Replaces any 230V DC magnet controller. Designed for all 230V DC generators and magnets.

Improves efficiency and lifting capacity by operating the magnet and generator at cooler temperatures.

Connects magnet and generator so that magnet voltage can not exceed the generator voltage. This increases the life of the magnet and eliminates the need for expensive contactor maintenance.

Increases magnet lifting capacity up to 30%.

Saves time and money by increasing production and reducing maintenance time and expense.

Produces consistent, clean drops.

Requires no additional AC generator, belts or pulleys to purchase, install or maintain. Electrical components are locally available.

Simplifies installation and set up. Virtually maintenance free.

Covered by a 2 year limited warranty.

System Includes: NorthStar Controller Unit in Nema 412 Enclosure, Power Inverter, Remote Monitor Panel, Operator Control Switch 300 VDC Panel Meter, and Manuals. Controller Size: 16" x 24" x 8"

"For the amount of money we used to spend in one year on downtime and maintenance for one conventional controller, we've purchased six NorthStar controllers." - Oregon Steel Mills

NORTHWEST MAGNET INDUSTRIAL CONTROLS

508 NORTH TILLAMOOK STREET • PORTLAND, OREGON 97227

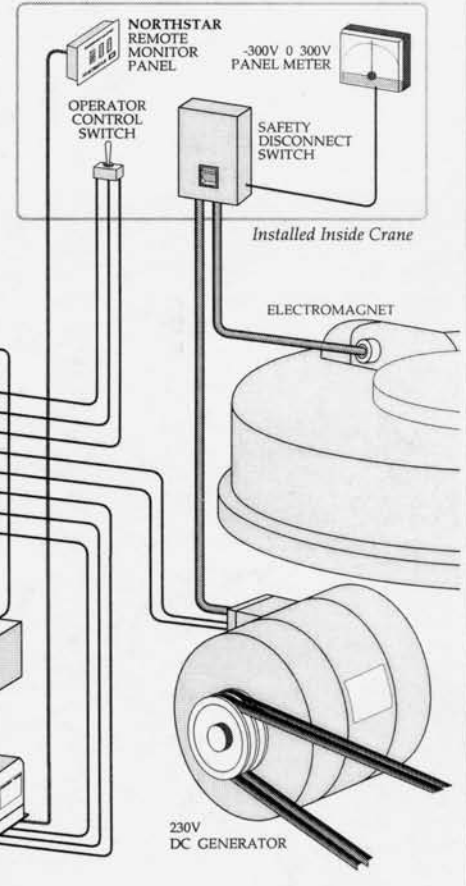
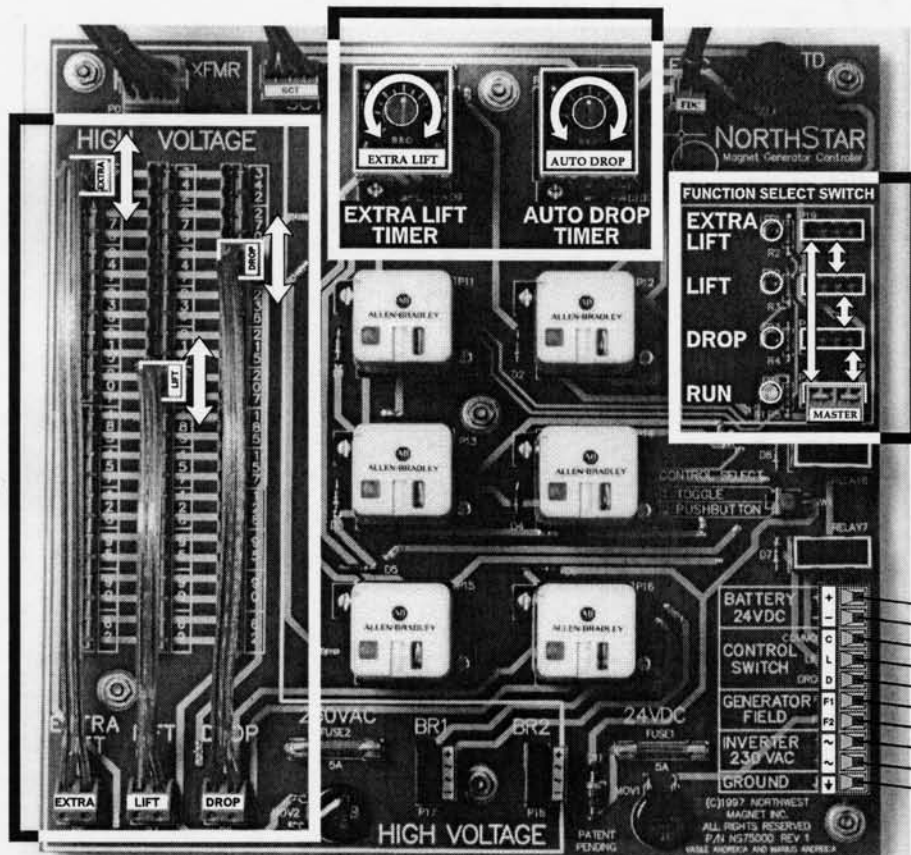
PHONE 503-282-1441 FAX 503-282-5858

INSTALLATION is a breeze. Simply install the components and connect the wires.

B

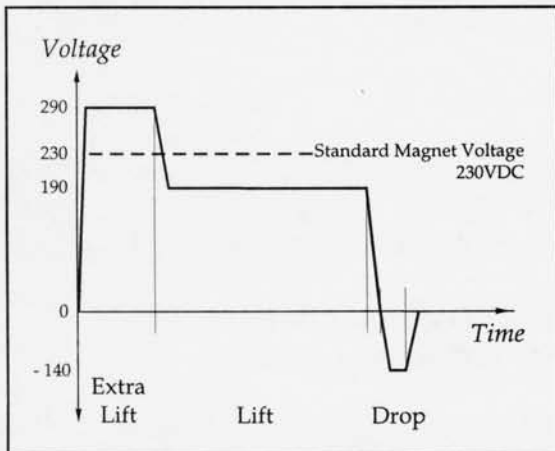
C

A



SETUP is as easy as **A B C**

- A** Select the function that you want to set
 - B** Set the corresponding function voltage
 - C** Adjust timers to the desired time intervals
- Now you're ready for action.



Magnet and Generator Voltage Diagram

The **NORTHSTAR** offers the following advanced features:

- EXTRA LIFT** enables the magnet to lift up to 30% more steel.
- LIFT** (reduced voltage carry mode) keeps the magnet cooler so it can operate more efficiently and work longer without compromising lifting capacity.
- AUTO DROP** automatically cleans the magnet after each lift.
- MANUAL DROP** removes magnetized material from magnet.
- MANUAL DROP** (reverse lift mode) is used to sort and separate metals by size and weight.

VIRTUALLY NO MAINTENANCE REQUIRED

Modular plug-in design allows for quick and easy replacement of electrical components. **No tools required** to change plug-in type components (relays, rectifiers, fuses & timers). **Parts available locally** from multiple vendors or may be purchased direct from factory.